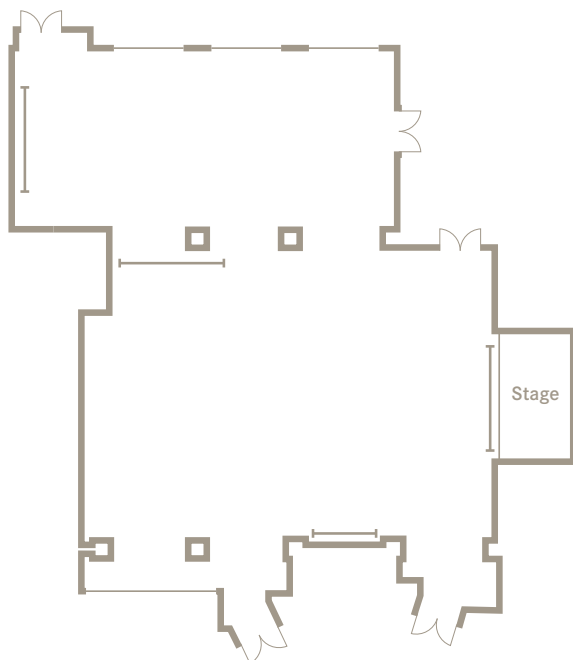
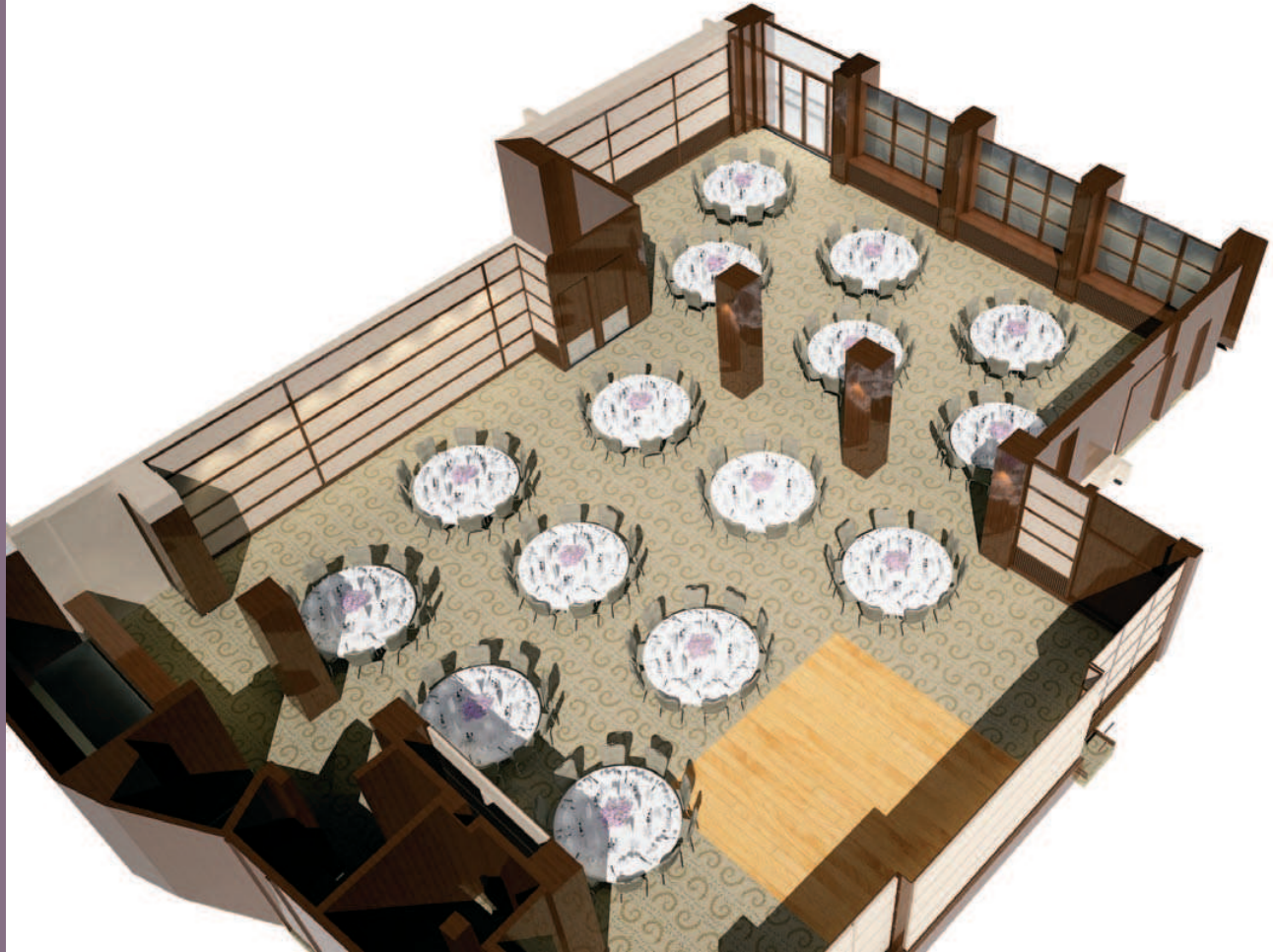


# The Golden Apple Suite

Our largest suite has recently undergone a multi-million pound refurbishment and can accommodate up to 300 guests. Situated on the ground floor of the hotel, with direct access to reception, this impressive room is extremely versatile, allowing vehicular access. It boasts an abundance of technology, including a number of large

screens, state-of-the-art HD video and a fully integrated music and lighting system, as well as a stage and private bar. The air conditioned suite's flexibility means it can be used for anything from large-scale video conferencing to family celebrations.



## Capacities

Theatre	270
Classroom	180
Banquet	230
Dinner Dance	180
Reception	300

## Dimensions

Length	15.5m
Width	18.6m
Floor space	288m <sup>2</sup>
Height (Max)	2.9m
Height (Min)	2.9m

— Dropdown screen